

PTP/PTMP 300Mbps 30KM Wireless Bridge

GP-AB930-30 Series



Introduction

GP-AB930-30 Series is a high-performance 5.8GHz outdoor wireless bridge that offers a data transfer rate of up to 300Mbps. It features an external high-gain directional antenna, enabling long-distance wireless connectivity of up to 30 KM through wireless WDS connection method. With an IP66 protection rating, this device is designed to operate reliably in harsh outdoor environments.

GP-AB930-30 support multiple operation modes, including bridge mode, AP mode, router mode. It is compatible with 802.11a/n/ac standards, catering to diverse network requirements.

GP-AB930-30 is designed for rugged industrial environments, ideal for applications in coal mines, oil fields, power plants, telecommunications, and monitoring systems. It ensures reliable long-distance video transmission and wireless connectivity, making it perfect for scenarios requiring extensive coverage and stable performance.

Main Feature

- Support 802.11 a / n / ac Standard
- Support Single-Band with 300Mbps Speed (2×2 MIMO)
- Support MAX. up to 30km wifi transmit distance
- Support Wireless Bridge&Router Mode
- Support Intelligent QoS wireless multimedia optimization technology
- Prioritizes stable transmission of voice and video.
- Web-based management for easy installation and maintenance.
- Support wireless controller (AC) management with remoteconfiguration/upgrade.
- Support 10/100/1000Mbps RJ45 Ethernet
- Support IEEE 802.3 at PoE Power Supply
- Support Diversified Access Authentication Methods
- Support IP66 Protection-Level

Hardware Parameter

CPU		IPQ4028
DDR		256MB DDR3L, 32MB Flash
Size		Device: 220x110x44mm Antenna : 787x129x47mm
Weight		Device : 0.56kg Antenna : 1.44kg
Port	Ethernet	1 × 10/100/1000Base-T RJ45 Port(PoE)
	RF	2*SMA Type
Antenna	Gain	20dBi
	Beam width	Horizontal: 110° Vertical: 10
MAX Transmit Power		27dBm
Adjustable Granularity		1dBm
Operating Temperature		-40°C ~ 75°C
Storage Temperature		-40°C ~ 85°C
Operating Humidity		5%~95%(Non-condensing)
IP Protection Level		IP66
Power Supply		Support 802.3at Power Supply
Max. Consumption		≤12W
Average Consumption		≤9W
MTBF		>250000H

Software Parameter

Protocol	802.11 a/n/ac
Frequency	5180~5320MHz、 5745~5825MHz (CHINA) 5180~5320MHz、 5500~5720MHz、 5745~5825MHz (USA) 5160~5340MHz、 5480~5720MHz、 5745~5865MHz (INDIA) 5160~5340MHz、 5480~5720MHz、 5745~5825MHz (UAE) 5745~5805MHz(Indonesia) Frequency Range: 4920~6100MHz (Please comply with local laws and regulations) * The above frequencies need to be supported by specific versions
Working Mode	Access Point, Client
Security	WPA2-PSK, IP/MAC filter, ACL Replay
Management	Support Website /AC Remote deploy
VTrans	TDMA+: Maximizes efficiency by eliminating hidden terminal issues. Frequency Expansion: Reduces interference with more frequency options. Channel Width Selection: Minimizes interference by adjusting channel width. AutoAck: Optimizes performance for long distances with smart ACK calculations
Others	Device Alerts, Spectrum Scanning, Link Testing, VLAN , QoS, Watchdog

RF Parameter

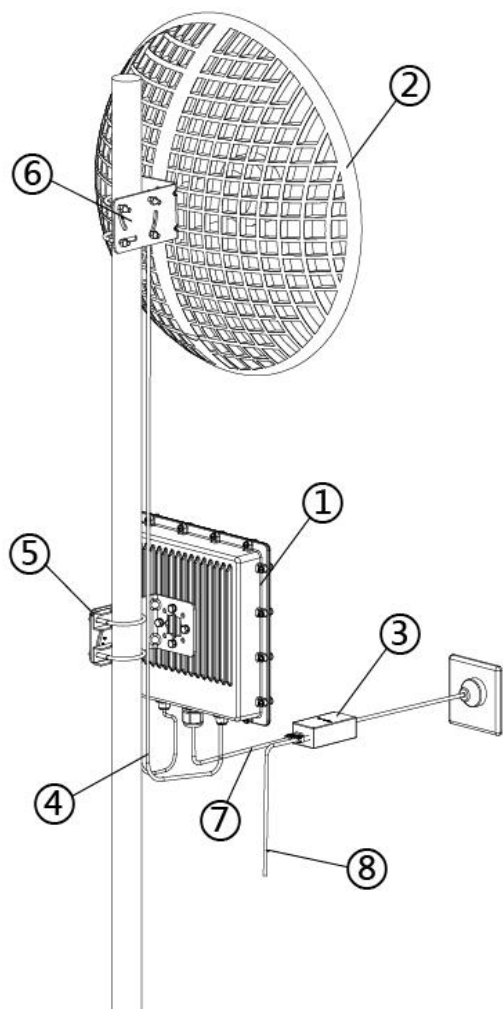
	Transmit power			Receiving sensitivity		
	Rate	Power	Tolerance	Rate	Sensitivity	Tolerance
11 b/g/n	1 Mbps	20dBm	+/- 2dBm	1 Mbps	-96dBm	+/- 2dBm
	11Mbps	20dBm	+/- 2dBm	11Mbps	-89dBm	+/- 2dBm
	6 Mbps	18dBm	+/- 2dBm	6 Mbps	-91dBm	+/- 2dBm
	54 Mbps	16dBm	+/- 2dBm	54 Mbps	-73dBm	+/- 2dBm
	HT20 MCS0 (Merge)	18dBm	+/- 2dBm	HT20 MCS0	-91dBm	+/- 2dBm
	HT20 MCS7(Merge)	15dBm	+/- 2dBm	HT20 MCS7	-69dBm	+/- 2dBm
	HT40 MCS0(Merge)	18dBm	+/- 2dBm	HT40 MCS0	-89dBm	+/- 2dBm
	HT40 MCS7(Merge)	15dBm	+/- 2dBm	HT40 MCS7	-67dBm	+/- 2dBm
11a/n	6 Mbps	27dBm	+/- 2dBm	6 Mbps	-91dBm	+/- 2dBm
	54 Mbps	25dBm	+/- 2dBm	54 Mbps	-73dBm	+/- 2dBm
	HT20 MCS0 (Merge)	30dBm	+/- 2dBm	HT20 MCS0	-91dBm	+/- 2dBm
	HT20 MCS7(Merge)	27dBm	+/- 2dBm	HT20 MCS7	-70dBm	+/- 2dBm
	HT40 MCS0(Merge)	30dBm	+/- 2dBm	HT40 MCS0	-88dBm	+/- 2dBm
	HT40 MCS7(Merge)	27dBm	+/- 2dBm	HT40 MCS7	-68dBm	+/- 2dBm
11ac	HT20 MCS0(Merge)	30dBm	+/- 2dBm	VHT20 MCS0	-91dBm	+/- 2dBm
	HT20 MCS8(Merge)	26dBm	+/- 2dBm	VHT20 MCS8	-67dBm	+/- 2dBm
	HT40 MCS0(Merge)	30dBm	+/- 2dBm	VHT40 MCS0	-87dBm	+/- 2dBm
	HT40 MCS9(Merge)	26dBm	+/- 2dBm	VHT40 MCS9	-64dBm	+/- 2dBm
	HT80 MCS0(Merge)	30dBm	+/- 2dBm	VHT80 MCS0	-85dBm	+/- 2dBm
	HT80 MCS9(Merge)	26dBm	+/- 2dBm	VHT80 MCS9	-60dBm	+/- 2dBm

* The combined power in the above table is the single-channel power tested +3dB

Environment

Surge Immunity	1. Differential mode: line pair -line pair (-48V-RTN) 1.5KV (1.2 / 50us 42 ohm) CriterionB line pair-line pair (-48V -RTN) 1.5KV (10 / 700us 15 + 25 ohm) Criterion C 2. Difference mode: (difference pair) 0.5kV 42ohm 1.2 / 50us Criterion C 3. Common mode: 1 KA 4. Difference mode 250A (four line to four line), 8 / 20us, Criterion c
Electrostatic Discharge	Contact discharge: 6KV, air discharge: 8KV
Wind-resistant speed	200km/h

Installation Method & Accessories

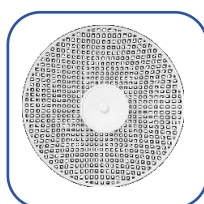


1. Wireless transmission device
2. Antenna
3. POE power supply
4. Feeder
5. Equipment mounting bracket
6. Antenna mounting bracket
7. Can be connected to POE power supply
8. LAN port of POE port can connect to external devices

*The actual installation height should be determined according to the transmission distance and the installation environment, and there should be no obstruction between the two points.



Device *1



Antenna*1



Manual*1



Accessories*1

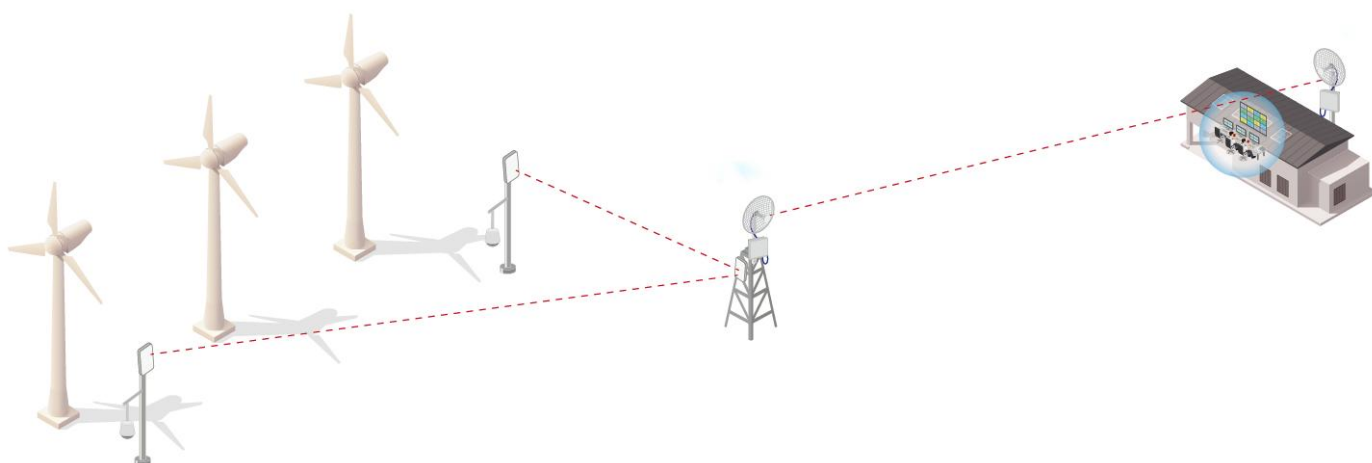


PoE Adapter*1



Feeder*1

Application Scenario



INDUSTRIAL NETWORK SOLUTION SPECIALIST



© GPSENKE(CHINA) | All rights reserved.
Update Time: 2025.5.27

This document and any part thereof may not be reproduced or used in any manner without the express written permission of GPSENKE (China).
Product specifications are subject to change without prior notice. Please visit our website for the latest product information.