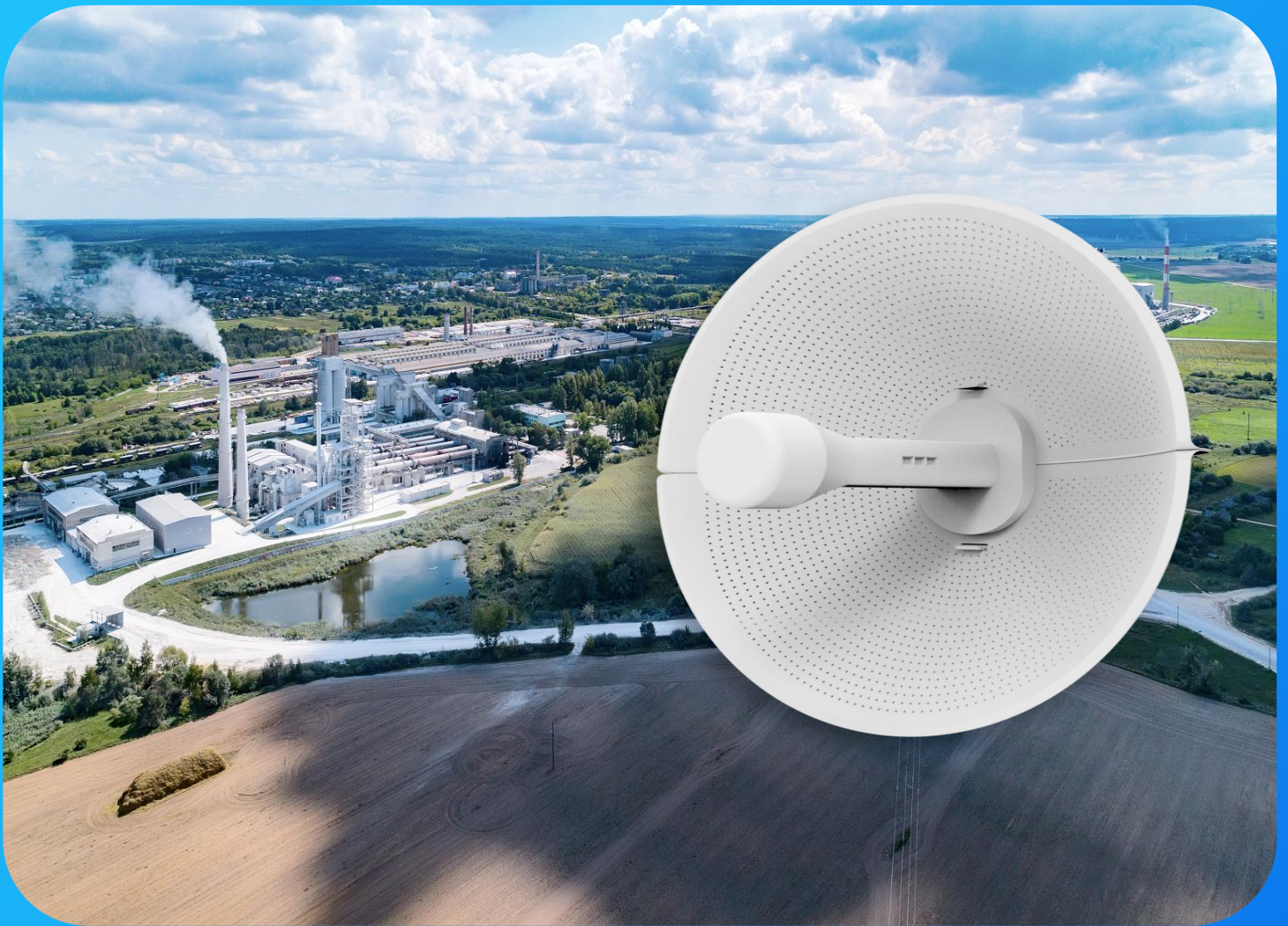




PTP/PTMP 867Mbps 10KM Wireless Bridge

GP-AB950-10-P Series



INDUSTRIAL NETWORK SOLUTION SPECIALIST
WWW.GPSENKE.COM



Introduction

GP-AB950-10-P Series is a high-performance 5.8GHz outdoor wireless bridge that offers a data transfer rate of up to 867Mbps. It features a built-in high-gain directional antenna, enabling long-distance wireless connectivity of up to 10 KM through wireless WDS connection method. With an IP66 protection rating, this device is designed to operate reliably in harsh outdoor environments.

GP-AB950-10-P supports multiple operation modes, including gateway mode, bridge mode, relay mode. It is compatible with 802.11a/n/ac standards, catering to diverse network requirements.

GP-AB950-10-P is designed for rugged industrial environments, ideal for applications in coal mines, oil fields, power plants, telecommunications, and monitoring systems. It ensures reliable long-distance video transmission and wireless connectivity, making it perfect for scenarios requiring extensive coverage and stable performance.

Main Feature

- Support 802.11 a / n / ac Standard
- Support 5.8G Single-Band with 867Mbps Speed
- Support up to 10km wifi transmit distance
- Support PTP/PTMP
- Support Wireless Bridge&Router Mode
- Support Intelligent QoS wireless multimedia optimization technology
- Support 100Mbps RJ45 Ethernet
- Support IEEE 802.3 at PoE Power Supply
- Support Diversified Access Authentication Methods
- Support IP66 Protection-Level

Hardware Parameter

Size		372mm×241mm
Weight		0.9kg
Port	Ethernet	1 × 10/100/1000Base-T RJ45 Port(PoE)
Antenna	Gain	23dBi
	Beam width	Horizontal: 10° Vertical: 10
MAX Transmit Power		27dBm
Adjustable Granularity		1dBm
Operating Temperature		-40°C ~ 75°C
Storage Temperature		-40°C ~ 85°C
Operating Humidity		5%~95%(Non-condensing)
IP Protection Level		IP66
Power Supply		Support 802.3at Power Supply
Consumption(Client5.8G)		≤15W
IP Protection Level		>250000H

Software Parameter

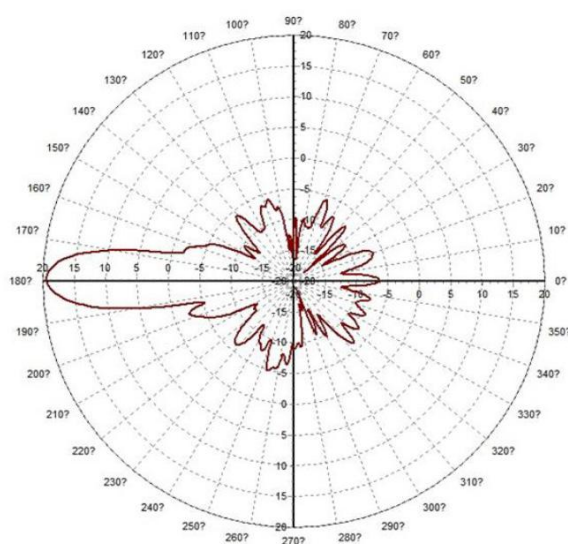
Protocol	802.11 a/n/ac
Frequency	5180~5320MHz、5745~5825MHz (CHINA) 5180~5320MHz、5500~5720MHz、5745~5825MHz (United State) 5160~5340MHz、5480~5720MHz、5745~5865MHz (India) 5160~5340MHz、5480~5720MHz、5745~5825MHzs(UAE) 5745~5805MHz (Indonesia) Frequency Range: 4920~6060MHz (Please comply with local laws and regulations) * The above frequencies need to be supported by specific versions
Working Mode	Access Point, Client,WDS Access, WDS Client
Security	WPA2-PSK, Hidden SSID, IP/MAC filter
Network Mode	Bridge/Router
Management	Support Website /AC/SNMP deploy
VTrans	TDMA+: Maximizes efficiency by eliminating hidden terminal issues. Frequency Expansion: Reduces interference with more frequency options. Channel Width Selection: Minimizes interference by adjusting channel width. AutoAck: Optimizes performance for long distances with smart ACK calculations
Others	Scheduled restart, support VLAN , QoS, Watchdog

RF Parameter

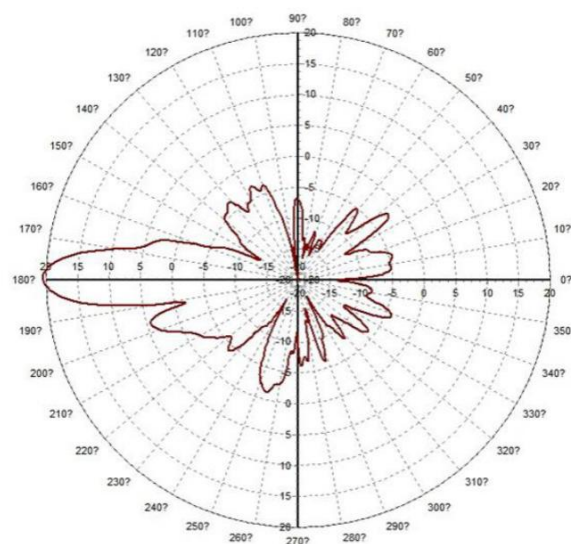
	Transmit power			Receiving sensitivity		
	Rate	Power	Tolerance	Rate	Sensitivity	Tolerance
11 a/n	6 Mbps	24dBm	+/- 2dBm	6 Mbps	-91dBm	+/- 2dBm
	54 Mbps	22dBm	+/- 2dBm	54 Mbps	-73dBm	+/- 2dBm
	HT20 MCS0 (Merge)	27dBm	+/- 2dBm	HT20 MCS0	-91dBm	+/- 2dBm
	HT20 MCS7(Merge)	24dBm	+/- 2dBm	HT20 MCS7	-70dBm	+/- 2dBm
	HT40 MCS0(Merge)	27dBm	+/- 2dBm	HT40 MCS0	-88dBm	+/- 2dBm
	HT40 MCS7(Merge)	24dBm	+/- 2dBm	HT40 MCS7	-68dBm	+/- 2dBm
11ac	HT20 MCS0(Merge)	27dBm	+/- 2dBm	HT20 MCS0	-91dBm	+/- 2dBm
	HT20 MCS8(Merge)	23dBm	+/- 2dBm	HT20 MCS8	-67dBm	+/- 2dBm
	HT40 MCS0(Merge)	27dBm	+/- 2dBm	HT40 MCS0	-87dBm	+/- 2dBm
	HT40 MCS9(Merge)	23dBm	+/- 2dBm	HT40 MCS9	-64dBm	+/- 2dBm
	HT80 MCS0(Merge)	27dBm	+/- 2dBm	HT80 MCS0	-85dBm	+/- 2dBm
	HT80 MCS9(Merge)	23dBm	+/- 2dBm	HT80 MCS9	-60dBm	+/- 2dBm

* The combined power in the above table is the single-channel power tested +3dB

RF Direction

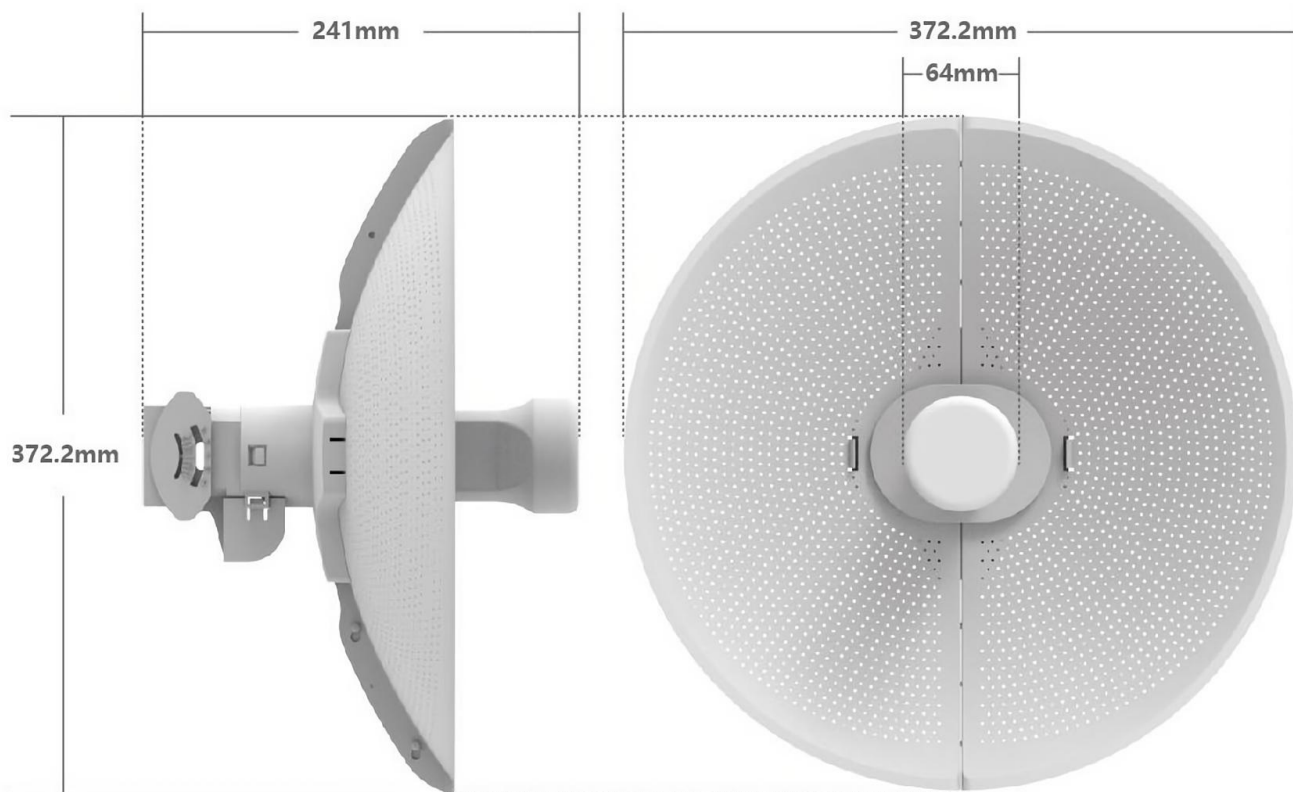


Horizontal



Vertical

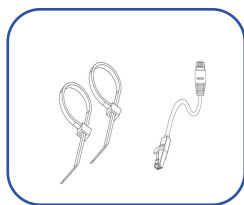
Appearance & Accessories



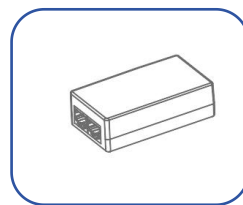
Packing *1



Device*1



Accessories*1



PoE Adapter*1



Manual*1

Model Selection

Model	GP-AB950-10-P	GP-AB950-10-D
Speed	867M	
Design	Parabolic Integration	Build-in Antenna Bridge

INDUSTRIAL NETWORK SOLUTION SPECIALIST



© GPSENKE(CHINA) | All rights reserved.
Update Time: 2024.9.1

This document and any part thereof may not be reproduced or used in any manner without the express written permission of GPSENKE (China).
Product specifications are subject to change without prior notice. Please visit our website for the latest product information.